

## eztracker@trbo™: simple tracking and messaging

Text and locate MOTOTRBO™ two-way radios

NAI/data SUPPORT



### REAL-TIME TRACKING OF YOUR ASSETS USING MOTOTRBO GPS-ENABLED RADIOS!

eztracker@trbo is a single position application to monitor at all times the whereabouts of your fleet using OpenStreetMaps and contact them via text messaging. Tether your base station to any PC and use it for voice calls at the same time.

- Visualize the individual position of each radio
- Monitor if your vehicles are heading into traffic and reroute them appropriately
- Selected a radio to center the map on it
- Text individual or group of radios

### EXTREMELY SIMPLE TO CONFIGURE AND AFFORDABLE!

eztracker@trbo answers the requests of many customers that are mostly interested in locating their subscribers, without incurring into the cost burden of un-necessary features. It also does not require a dedicated server or workstation thus minimizing the overall TCO.

eztracker@trbo runs on any Microsoft Windows PC with internet access and tethered via the standard USB programming cable to a MOTOTRBO radio used as a control station. This radio can simultaneously act as a traditional base station and operated for voice calls using the microphone connected to the radio. In addition, eztracker@trbo can also support a second (and a 3rd one for text with Enhanced GPS) control station for conventional GPS revert operation to offload the GPS reporting to a data channel. Alternatively, it can interface directly via IP to a repeater using the NAI/data interface in place of control station(s).

eztracker@trbo only displays active radios that have registered their presence, thus reducing confusion with others that are turned off or out-of range.

It is truly easy to install and intuitive to operate, requiring minimal or no training.

The map can be accessed by other users via their browser using a web server installed on the same PC or by remote management software.

### Selected Features

- Single client and server application
- Conventional, IP site connect and Capacity Plus, GPS revert
- Displays up to 200 subscribers
- Uses ARS for active radio presence
- OpenStreetMaps
- Different zoom levels
- Displays radio position, speed, altitude, direction and street address
- Periodic or immediate location updates
- Radio name aliasing
- Highlight selected radio on the map
- Text a talkgroup or an individual radio
- Log messages, reply or forward them
- Excel-compatible logs (CVS format)
- Rapid deployment

### Typical Applications:

- Transportation
- Hospitality
- Education
- Rentals
- Other commercial markets

# eztracker@trbo - MOTOTRBO fleet tracking and messaging

## FEATURES

- Single radio (1 slot) or dual radio configuration with GPS revert (2 slots)
- Support MOTOTRBO conventional, IP Site Connect, Capacity Plus and LCP
- Direct USB to radio or IP wireline interface for MOTOTRBO signaling
- MOTOTRBO ARS services for individual radio presence
- MOTOTRBO GPS services for location reporting
- MOTOTRBO TMS services for text messaging
- Supports OpenStreetMaps with live traffic and temperature information
- Maps can be zoomed and panned
- Maps refresh is limited to a programmable time to reduce internet access
- Freeze map refresh
- Active list of radios (aliased by names)
- Global and individual radio reporting
- Immediate location reporting
- Highlighting on the map of selected radio
- Location recording and playback to Excel-compatible CVS format
- Application can be automatically started with Windows

## EASY TO DEPLOY

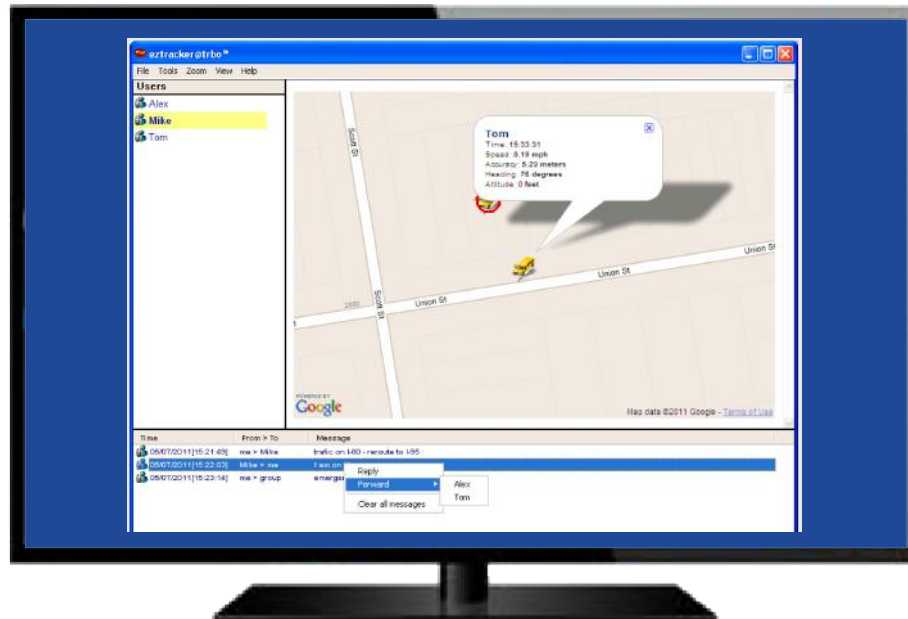
- Runs on any Microsoft Windows 10 or greater PC
- Radio connection: standard MOTOTRBO mobile USB programming cable or network (TCP/ IP)

## CONFIGURATIONS:

- Normal: 25 subscribers
- Enhanced: 100 subscribers and GPS revert
- Advanced: 200 subscribers and GPS revert
- Trial: 3 radios and GPS revert

## PROFESSIONAL SERVICES:

Customizations available for special requirements.



## UNIQUE EXPERIENCE

Understanding the critical requirements of your business, we have grown by listening and appreciating your trust. We can only make great products if they need no support or, as needed, we are there to promptly help you. Since 2001 we have provided device manufacturers, dealers, and end-customers best-in-class prompt and hands-on support. All of our products are developed by us, right here in the USA. They are tightly integrated and modular to scale seamlessly and meet your requirements now and in the future.



Developed and Supported in the United States of America



Visit Our Website  
<https://tablet.media>



Call Us Today  
+1 (415) 567-8100



## Let's Talk About Your Project

We stay on top of our industry by listening to your needs and helping you from start to finish.

# TABLETmedia

CONTACT US +1 (415) 567-8100 • SALES@TABLETMEDIA.COM

Copyright © 2024 TABLETmedia, Inc. – All rights reserved.  
eztracker@trbo™ is a trademark of TABLETmedia, Inc.  
All other trademarks belong to their respective companies.