

# iTalkie™: the scalable dispatch solution

## Multi-modal IP bridge to Motorola MOTOTRBO™ 2-way radios

Exchange and record voice calls and text messages between your handhelds, PCs and 2-way radios. Use them as pagers and to communicate via email!

- Users of radios and computers can finally communicate between each other
- Employees can use their PCs to talk and send messages to others on their radios and handhelds
- Users with heavy handheld computers do not need to also carry radios and pagers
- Get more ROI out of your handhelds while maintaining your investment in radios
- Optimize communication equipment by mix and matching radios and handhelds
- Enable true convergence!

iTalkie™ is a very flexible solution that can easily meet most customers' different requirement. Whether you need to dispatch voice and text to radios and mobile computers, run work order management applications or simply send text alerts to radios, cellphones via SMS and handhelds, iTalkie™ is your Swiss-army knife.

The solution grows as needed: it can start as a simple call logger for a small radio network or to enable PTT over WiFi on rugged mobile computers, and grow to control several control station with thousands of radios, PDAs, PCs and dispatchers in multiple sites.

### Instant converged PTT, VoIP and text!

iTalkie™ answers the demand of customers that require a quality text and voice solution which is easily deployable, maintainable and cost effective. It is a serverless software solution for push-to-talk with presence-driven phone-like calling and text. It easily expands and scales by "dropping" components in the network without the need to reprogram the devices.

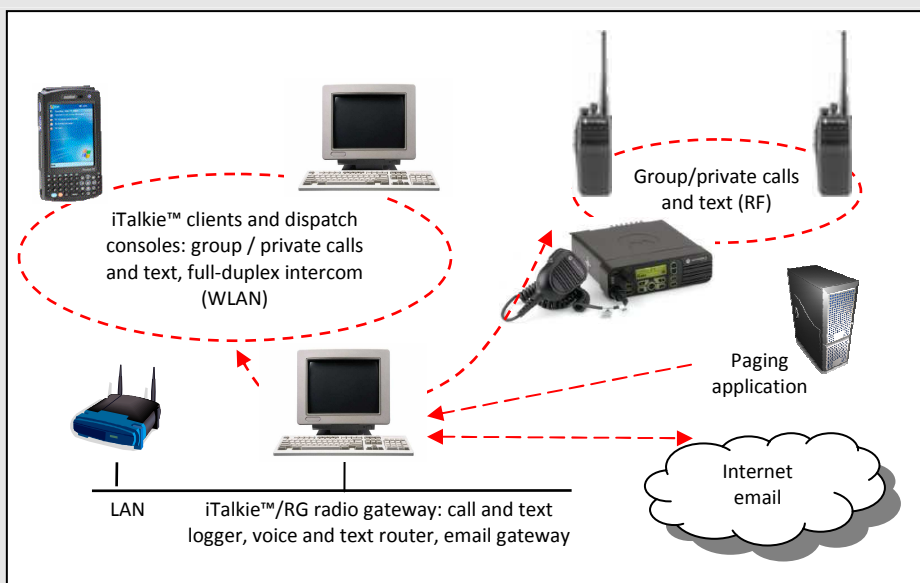
It also reduces TCO: since all of its software applications are optimized to require minimal storage and processing power, they can be deployed on existing systems to eliminate capital equipment expenditures.

### Selected Features

- Half-duplex calls between radios, handhelds and PCs
- Full-duplex intercom calls between PCs and handhelds
- GPS location services via Google Maps
- Auto-linking (cross-patching)
- Bridge bands and RF technologies (analog/digital)
- Text messages between email, radios, handhelds and PCs
- Email gateway
- Compatible with paging applications
- Configurable text routing
- Record all voice and text traffic
- Unlimited number of clients and gateways
- Rapid deployment
- Direct interface to Motorola MOTOTRBO™ or analog radios

### Typical Applications:

- Warehousing / Manufacturing
- Retail
- Hospitality
- Education
- Public utilities
- Chemical plants
- Rural public safety
- Government



# iTalkie™ solution – multi-modal fixed and mobile distributed dispatch

## iTalkie™/DS: dispatch console

- One-to-many and one-to-one half-duplex voice
- One-to-one full duplex voice intercom
- Display radio locations with Google Maps
- Group and private text messaging
- Intuitive point and click to call user interface
- Last call reply and replay, all system call and text, channel scanning
- Call and messages history with double click for fast reply
- Remote radio monitor, check, inhibit, alert, emergency display
- Control station control (change channels and display channel status)
- Very high quality voice with background noise canceling

## iTalkie™/RG: radio gateway

- Half-duplex voice bridge between IP and radio networks
- Auto-linking (cross-patching) to automatically route calls from radios
- Text messages with advanced programmable routing
- 2-way SMTP or SMTP/POP3 email gateway
- SCADA: serial and network interfaces to email, radios and consoles (TAP, COMP2)
- Unlimited recording of group calls and text messages
- MOTOTRBO™ digital interface with channel control, LCD display and audio levels

## iTalkie™ clients

- Voice: 1:1, 1:M half-duplex, 1:1 full-duplex intercom
- Group and private text messaging
- Channel scanning, all call, last call reply and replay
- High quality voice with background noise canceling
- Thin client with IP network load optimization
- Cross platform: Windows PCs, Windows Mobile and CE

## iTalkie™/PA Gateway

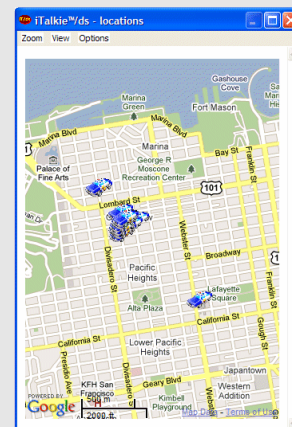
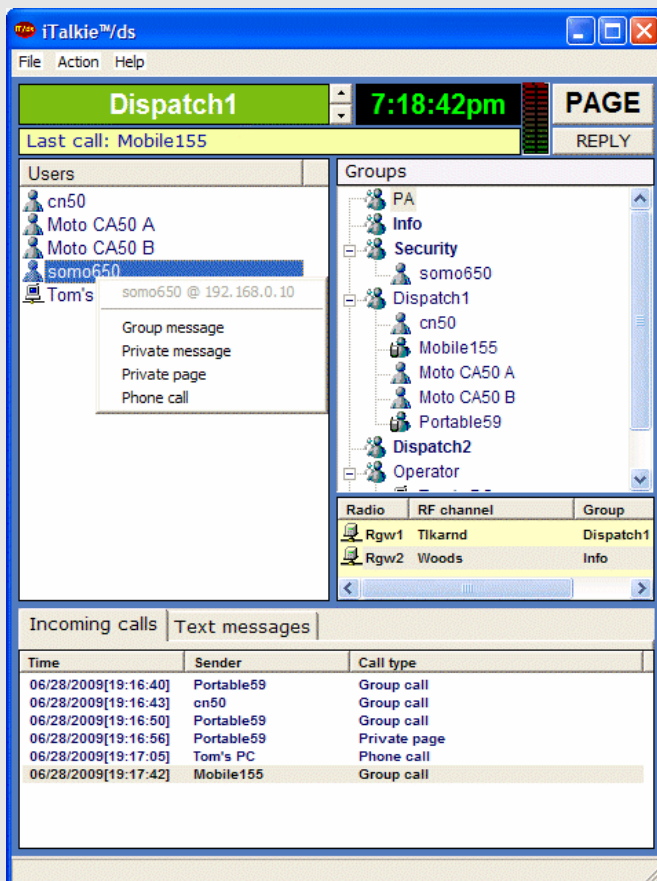
- Make calls through the overhead paging system
- Half-duplex voice through PC sound card

## Easy to deploy

- Scalable to thousands of users and control stations
- Software only solution, no 3<sup>rd</sup> party software required!
- Radio connection: 3<sup>rd</sup> party USB cable to MOTOTRBO™ radios or inexpensive adapter for analog radios

## Professional services:

- Customizations available for special requirements



**TABLETmedia, Inc.**  
 2468 Union Street  
 San Francisco, CA 94123  
 Tel: +1 (415) 567-8100  
 Fax: +1 (415) 567-1362

<http://www.tabletmedia.com> - 1/10  
 Copyright © 2001-2010 TABLETmedia, Inc. – All rights reserved.  
 TABLETmedia text@trbo™, iTalkie™ and iFon™ are trademarks of TABLETmedia, Inc.  
 MOTOROLA and the Stylized M Logo are registered in the US Patent & Trademark Office  
 All other trademarks belong to their respective companies.